



# Miskwaagamiwi-zaaga'iganiig Aki-genawendamowaad

*Red Lake Department of Natural Resources*

**Dagwaagin**  
*Fall 2024*

## **IN THIS ISSUE**

**Ezhi-ayaag-gidakiiminaan**  
*Environmental | 2*

**Giigoonyikewin**  
*Fisheries | 4*

**Ezhi-ganawenjigaadeg-Nibi**  
*Water Resources | 6*

**Awesiinhyia**  
*Wildlife | 8*

**Ishkode**  
*Fire | 10*

**Miskwaagamiwi-zaaga'iganing  
Miti-gokewin**  
*Forestry | 11*

**Eni-aanji-izhiwebak**  
*Climate Change | 11*

**Izhaadaa Agwajiing**  
*Let's Go Outside | 12*

## **RED LAKE DNR**

15761 High School Drive  
Red Lake, MN 56671

Phone: 218-679-3959

Fax: 218-679-2830

rldnr@redlakenation.org

Visit us on the web!

[www.redlakednr.org](http://www.redlakednr.org)



Like our Facebook Page  
**Red Lake DNR**

## **Mazina'igan onji Odaakewigima** *Letter from Director*

Boozhoo Relatives!

This spring (ziigwan) and summer (niibin) has been really wet with heavy rainfall that gave way to a dry August and early fall (dagwaagin). Water levels in our lakes recovered with the high amounts of rain. However, as a result manoomin (wild rice) is scarce.

This year's Cops and Bobbers and Red Lake DNR joint fishing event was a success with over 100 kids registered. The kids caught some really nice fish on Fullers Lake this year. Miigwetch to everyone who donated to make this event a success.

The spring fire season was relatively short this year. However, our fire crew has stayed busy with helping other states with fires out west in Montana and Idaho and south in Arizona and Oklahoma. Be careful if you decide to burn and obtain a fire permit at the Fire Center or on the DNR website as this fall has been warm and dry. Our foresters have been busy setting up sales as well as forest improvement projects to open up the canopy on our backroads to help dry out these roads and improve the road quality.

Our hunting season, which began September 15th, has had early success for members who have harvested some nice elk in our 1863 Treaty land. A reminder that members are encouraged to bring in their adult white-tailed deer heads for CWD testing. You will receive a raffle entry per head for a chance at some really nice prizes.

Starting during ice breakup, the Water Resources Program has been busy with projects and partnerships to help monitor, improve, and protect our water quality on and off the diminished Reservation. These projects and partnerships have resulted in substantial opportunities for the Water Resources Program to establish site-specific standards, improve lake accesses for members, and improve stream crossings to name just a few. As a reminder, community members are encouraged to properly dispose of Hazardous Waste by bringing those materials to the Transfer Station to help prevent these chemicals from entering our waters.

The Izhaadaa Agwajiing (Let's Go Outside) Program is nearing the completion of a second building at the Trailhead area near Long Lake. Equipment brought in for this Program will be free to the community to use which includes fishing gear, mountain bikes, and cross country skis just to name a few. Please visit their Facebook page for up-to-date events.

As always, please stay safe out there during the fall season and good luck hunting or fishing. Please check our website: [www.redlakednr.org](http://www.redlakednr.org) for current fire danger conditions, obtaining burning permits, and other news and announcements.

Everyone at the Red Lake DNR would like to thank you for your support and sincerely hopes that you have a great fall.

*Miigwetch!*

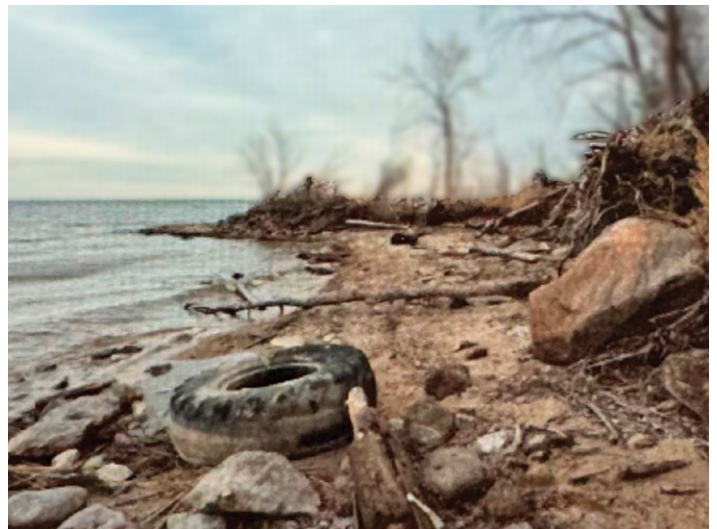
*Al Pemberton*

# Ezhi-ayaag-gidakiiminaan

## Environmental

### PHASE I ENVIRONMENTAL SITE ASSESSMENTS CONDUCTED

The Red Lake DNR Environmental Program Staff recently collaborated with The Red Lake Solid Waste Program Staff and Economic Development Staff on five Phase I Environmental Site Assessments (ESAs). These assessments were conducted utilizing EPA 104k Brownfields assessment grant funding. Stantec Engineering conducted the assessments at the five locations identified by the Tribe as potential brownfields sites. These sites included the Old Forestry Products location Old Redby Sawmill, The Red Lake Roads Garage, Bob's Towing in Red Lake, the old Hardware Hanks in Red Lake and the old Hospital building in Red Lake. Once all the Phase I ESA reports are finalized, the findings will be discussed and determinations as to whether a Phase II ESA is necessary. Additional Phase I ESA are in the planning phase as well with final locations to be determined.



# PROPER HOUSEHOLD HAZARDOUS WASTE DISPOSAL

The Solid Waste Program provides an area for community members to properly dispose of Household Hazardous Wastes to prevent these items from entering the waste stream. Community members can bring the items to the

Transfer Station in Red Lake during business hours and should check in with staff to drop off these items either at the used oil storage tanks or the hazardous substance collection area next to the transfer station.

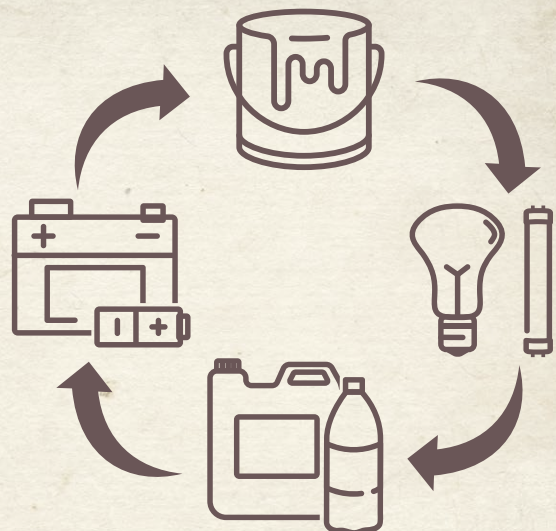
## Examples of Household Hazardous Wastes:

- Any material labeled with signal words: Danger. Caution. Warning. Poison.
- Paint.
- Solvents.
- Pesticides.
- Oven & drain cleaners.
- Furniture strippers.
- Wood preservatives.
- Used oils and automotive fluids and batteries.
- Fluorescent Light Bulbs.
- Batteries containing Lithium, Nickel, lead and button/coin type.



## HOUSEHOLD HAZARDOUS WASTE COLLECTION EVENTS

The Environmental Program has also recently secured USEPA funding to conduct Household Hazardous Waste Collection Events twice per year in each community. Environmental Program Staff will be parked in each community to collect items and will be available to go to homes of Elders to collect items by special request. These events will be announced in the Red Lake Nation Newspaper and on rlnn.com once they are scheduled.



# Giigoonyikewin

## Fisheries



## COPS AND BOBBERS AND RED LAKE DNR JOINT FISHING EVENT WAS A HUGE SUCCESS



This year the Red Lake DNR partnered with the Red Lake Law Enforcement Department to put on our annual kid fishing event at Fullers Lake. The weather was nice, a little windy, but everyone had a great time. We would like to thank all the parents and grandparents for bringing their kids and making this event a success. We had over 100 kids that registered this year and with parents and volunteers, we estimate over 150 people attended the event. The Public Safety and Red Lake DNR staff had 9 boats running on the lake, making sure that all kids that wanted to fish were able to fish for an hour or longer. We provided Zebco fishing rods and bait to the kids that participated in the event this year. The Red Lake Public safety provided the lunch and The Red Lake DNR provided the school supplies and fishing supplies. Bags of school supplies were given to all participants at the end of the day to help make sure the kids were ready for school. We hope that all the kids enjoyed themselves and wish them the best during this school year. We look forward to seeing you again next year!

Miigwetch





# Ezhi-Ganawenjigaadeg-Nibi

## Water Resources



### WATER QUALITY IMPROVEMENT PROJECTS

The RL DNR Water Resources Program has been able to improve a number of lake accesses under a special grant through the Natural Resources Conservation Service (NRCS). This grant has resulted in new docks and access improvements at Island Lake, Kinney Lake (Figure 1), and Lower Red Lake at the Outlet (Figure 2), Ponemah Town, and Ponemah Point (Figure 3). The intention of the project was to provide accesses that allow tribal members to fish subsistence species and launch boats without the need for off road capable trucks. We worked with engineers to improve some of the accesses to allow for easier launching with smaller vehicles and easier access to boats with improved docks. In addition, some of the docks have fishing platforms to allow members who don't have boats to more easily fish from shore.

In addition to improvements at lake accesses, we have completed another stream crossing project on the Shell Lake Trail at Little Rock Creek (Figure 4). We have extended the width of this crossing so that it may accommodate pedestrians and cyclists making use of the trail system in the Bass Lake area.



Figure 1. Kinney Lake dock with fishing platform.



Figure 3. Ponemah Point dock and improved access.



Figure 2. Red Lake outlet dock.



Figure 4. Shell Lake Trail culvert replacement.

## One Watershed One Plan

The One Watershed, One Plan (1W1P) is a planning process that allows governments to align water planning with watershed boundaries. It is a voluntary program administered through a state agency called the Bureau of Water and Soil Resources (BWSR). The process encourages counties, Soil and Water Conservation Districts, Tribes, and Watershed Districts to work together toward common goals. The Upper/Lower Red Lake Watershed (Figure 5) is unique in that all waters flow from outside the Red Lake Reservation into Tribal waters. This fact, along with an extensive history of partnership between the RL DNR and the Beltrami SWCD has resulted in the development of a comprehensive watershed management plan. Approval and adoption of the plan will result in 10 years of non-competitive funding for water quality improvement and protection projects throughout the watershed. Because this process is completely voluntary, the Tribe may opt out at any time.

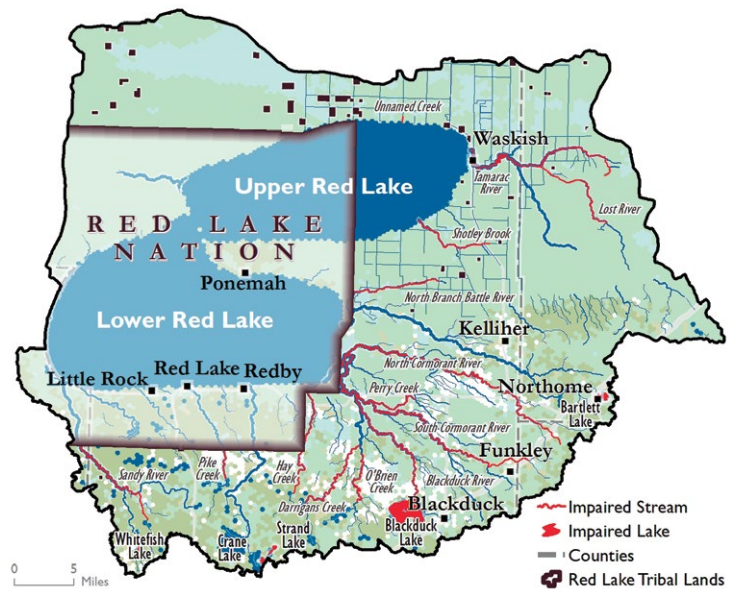


Figure 5. Upper Lower Red Lake Watershed map showing impairments.

The uniqueness of the watershed will also result in new and innovative approaches to water quality improvement projects. Since all of the streams flowing into either Upper or Lower Red Lake originate outside of reservation boundaries, projects and priorities need to, in essence, ignore those boundaries as they are prioritized. For the first time in the history of the Red Lake Water Resources Program, we will have staff working on the ground off-reservation to assist landowners to improve water quality. This process and these projects are beneficial to the Tribe in a number of ways. First, any improvement to water quality in the watershed works to improve and protect tribal waters. Second, having staff deeply involved in these projects allows greater input to priorities across the watershed as a whole. Third, partnerships like this tend to be more strongly supported than standalone efforts. This means that funding agencies like BWSR, US EPA, and MPCA are more likely to support projects with additional funding. Finally, and probably most importantly, building cooperative relationships with other government agencies will greatly increase our abilities as it has over the past decade.

Projects within Red Lake Nation using 1W1P funding will be completed as well. Since land uses inside Red Lake is so different, the nature of the projects will likely differ as well. In the agricultural areas of the watershed, projects will focus on improving water quality by adding conservation practices such as rotational grazing and cattle exclusions. Within Red Lake projects will look at storm water in each of the communities, undersized culverts, and abandoned well sealing. We are very excited to begin working on these projects to collectively protect water quality within the watershed. Check out the whole plan at [www.beltramiswcd.org](http://www.beltramiswcd.org) under the water planning tab or reach out to our program with any questions.

## Partnerships

The partnerships we have developed throughout the 1W1P process along with other projects have already resulted in substantial opportunities for the Water Resources Program. Just to name a few, we have been working with the St. Croix Watershed Research Station and the MPCA to develop a site specific standard for Upper and Lower Red Lake. This project is nearly complete. Our Nonpoint Source Specialist is developing a small watershed focus project that will provide 16 years of funding to work with landowners in the watersheds we have identified as priorities. We are working with BWSR on yet another grant to improve water quality on streams outside the reservation which will benefit Red Lake water quality. And most recently, we used a Bureau of Indian Affairs grant to fund a United States Geological Survey (USGS) training at Fond du Lac for tribes to learn about flow monitoring. This training ensures that tribal staff are collecting the highest quality data in their efforts to protect water quality. In short, the work that we are doing together far exceeds that which we could complete on our own. We are grateful to our partners across the watershed and across the region.

### WHAT IS CWD?

CWD is a contagious, fatal disease that affects the brain, spinal cord and other tissues of wild and captive cervids such as deer, moose, elk, caribou and reindeer. CWD is caused by abnormal prions (protein material within the deer) that become infectious and damage other proteins, which leads to brain damage in cervids. CWD is a prion disease that is similar to bovine spongiform encephalopathy (mad cow disease), scrapie (sheep) and Creutzfeldt-Jakob disease (humans). CWD is spread in the environment by an infected animal's body fluid and tissues, or by direct contact with an infected deer. Prions have been found to survive for long periods of time in the environment and are highly resistant to disinfectants, heat and freezing. There are no vaccines for CWD and it is always fatal. CWD is a slow progressing disease in cervids and it can take 1-3 years for symptoms to appear. A healthy deer can be positive for CWD, but not show any outward signs. Signs of infection include: weight loss, loss of muscle, drooling, loss of body control, tremors, staggering, drooping head or ears, confusion and loss of fear of humans.

### Where is CWD?

Chronic Wasting Disease (CWD) was first discovered in captive deer in Colorado in 1967 and in wild deer in 1981. Since then, it has been found in 25 states as well as 2 provinces in Canada. CWD is spreading throughout the upper Midwest and has been found in North Dakota, South Dakota, Nebraska, Iowa, Illinois, Wisconsin, Michigan and Minnesota. CWD was first detected in Minnesota in 2002 at a captive elk farm, and in wild white-tailed deer in 2010. Since then, it has been detected on 12 captive game farms and in wild herds in 6 counties. In April of 2021, it was detected at a captive deer farm in Beltrami County. In fall of 2022, it was detected in 2 wild deer in Hubbard County. There were no detections in our immediate area in 2023.



### What is being done to stop the spread?

To stop the spread of CWD in wild cervids, several agencies are working on developing faster diagnostic tests, researching the way CWD is spread and working on limiting the spread in wild and farmed cervids. There is currently no live animal test; the lymph nodes or brain tissue must be removed to be tested. The Red Lake DNR is accepting heads for testing from adult white-tailed deer harvested on Red Lake lands until December 31, 2024. This surveillance and precautionary testing is being done to find any CWD in our area early, allowing for quick and aggressive action to control it. Test results can take anywhere from 4-8 weeks depending on how busy the lab is. For each head that you bring in, you will be entered into a raffle. In 2023, 157 deer heads were tested and all tested negative for CWD.

### Can CWD be transmitted to humans?

Currently, there is no evidence that CWD poses a risk to humans. However, it is recommended that you do not eat venison from deer exhibiting symptoms or from deer confirmed to be CWD positive. Cooking or freezing the meat will not remove the prions if the meat is infected. It is up to individual hunters if they want to wait to consume the venison before receiving test results.



# RED LAKE HUNTING REGULATIONS

## RED LAKE TRIBAL MEMBERS

**Waterfowl:** No closed season, no bag limits, except in designated waterfowl production areas (Kiwosay, Zah Gheeng). Limited or no harvest of waterfowl is recommended during spring and summer.

**Small Game:** No closed season, no bag limits. Limited or no harvest of small game is recommended during spring and summer.

**Big Game:** Season is from September 15 through December 31, with no harvest limit.

**Moose: SEASON IS CLOSED** per Tribal Resolution

Seasons, limits and other regulations are subject to revision at any time by the Red Lake Tribal Council. Questions pertaining to hunting opportunities on Red Lake lands should be directed to the RL Department of Public Safety (218)-679-3315, or RL Department of Natural Resources (218)-679-3959.

## NON-MEMBERS

*All Permits may be purchased at the Red Lake Department of Public safety. Deer and small game permits are seasonally available at the Northwest Angle.*

**Waterfowl:** Seasons and bag limits are the same as in state and federal regulations. Allowed only on designated portions of the Diminished Reservation. Tribal Guide required.

**Small Game:** Ceded lands and Northwest Angle only. Seasons and bag limits are the same as MN state regulations.

**Big Game:** Deer hunting allowed at Northwest Angle only, with season concurrent with Minnesota's Zone-1 deer season. Tribal officials may issue special "non-member relative" permits for hunting on the Diminished Reservation.

Please help protect our natural resources. Respect tribal regulations and report any violations of fish and game laws to the Red Lake Department of Public Safety.



## ATTENTION DEER HUNTERS \*\*GUN RAFFLE\*\* GET YOUR DEER TESTED FOR CWD



Please bring your ADULT White-Tailed Deer heads to be tested for Chronic Wasting Disease (CWD) and be entered into a raffle **ONE RAFFLE ENTRY PER HEAD**

Heads can be dropped off at the Red Lake DNR between 8:00am -3:30pm Monday - Friday.

### **BIG GAME SEASON: SEPTEMBER 15-DECEMBER 31**

Raffle includes: Weatherby Vanguard .308 Win with Leupold VX-Freedom 3x9 Scope, spotlight, shooting sticks, meat processing kit, Leatherman, knife with sharpener, 30-06 150 grain ammo, 4-in-1 game hoist, \$160 L&M Fleet gift card

If you have any further questions, please contact DNR –Wildlife at: 218-679-3959



# Ishkode

## Fire



Lack of rain has brought drought conditions to the area. If you have mowed your lawn lately, you might have noticed your grass turning brown. This is due to the lack of moisture in the ground. With the hot, dry, and windy conditions recently, the fire crew has been staffing evenings and weekends already. If you are planning on burning leaves, or having a small fire, be mindful of the weather conditions, keep a shovel, and water handy. We are available Monday through Friday 8AM-4PM if you need to obtain your fire permit, or you can head to our DNR website to file for one online.

This summer was a busy one for our helitack crew, as we had 6 of our helicopter crew members and our manager helping other helitack crews nationally. They have traveled to Arizona, Montana, Oklahoma, Idaho and we currently have a crewmember in Utah. We also have an engine in Oklahoma assisting with fire suppression. The engine is currently on its second crew. So far 5 of our firefighters have been down to Oklahoma assisting.



# Miskwaagamiwi-zaaga'iganing Mitigokewin | Forestry

This upcoming fall the Red Lake Forestry Department is looking to continue efforts in reclaiming winter roads and brushing secondary backroads throughout the diminished reservation. The Forest Road Brushing Project aims to remove all coarse and woody vegetation within 12 feet from the road edge. Trees and brush in close proximity to the road edge introduce a sightline risk and reduce mutual clearance with on-coming traffic. In addition, a slightly opened canopy above the roadway allows for direct sunlight and airflow; allowing the roadway to dry quicker and improve road conditions. This fall efforts will be directed towards: Gonvick Truck



Trail, Big Stone Road, and Fireline road in reducing roadside vegetation. Roadway brushing and maintenance will allow for safer travel and increase road conditions on secondary roads within the diminished reservation.

## Eni-aanji-izhiwebak Climate Change

Mindy Phillips is thrilled to announce her recent appointment as the new Tribal Climate Change Specialist at the Red Lake DNR. This role, which is partially supported by the National Science Foundation, entails coordinating and organizing a comprehensive monitoring network for tribes in the region. This network is essential in consolidating climate change monitoring resources, ensuring the availability of the most current and accurate information.

Mindy's responsibilities include updating the climate change strategy to reflect the latest scientific discoveries and best practices. This step is critical in ensuring that the strategies are robust and effective in countering climate change impacts. Moreover, Mindy will coordinate the development of innovative tools designed to improve access to and utilization of climate datasets. These tools will enable informed decision-making backed by reliable data.

Mindy is also charged with leading the efforts to enhance the tribe's resilience to the adverse effects of climate change. This involves creating a comprehensive suite of tools and strategies aimed at bolstering the community's ability to adapt and prosper amidst climate challenges. Among the projects she is already working on are increasing solar power production, improving efficiency in homes and government buildings, and expanding access to electric vehicles and chargers. Her goal is to collaborate with everyone to construct a resilient future for the Red Lake Nation, ensuring readiness and capability to tackle and surmount the challenges posed by climate change.

Mindy is looking forward to working in partnership with other tribal programs and drawing upon their insights and experiences to guide these efforts. Together, they aim to forge a path towards sustainability and resilience, protecting the well-being of the Red Lake community for generations to come.



PRST STD  
US POSTAGE  
PAID  
BEMIDJI, MN  
PERMIT NO. 30

**RED LAKE DNR**  
15761 High School Drive  
Red Lake, MN 56671  
[www.redlakednr.org](http://www.redlakednr.org)

POSTAL CUSTOMER  
ECRWSS EDDM

## Izhaadaa Agwajiing

*Let's Go Outside*

### Boozhoo relatives!

We are nearing completion on the construction of our newest building at our Trailhead area. As we move into Fall and Winter we are planning on going live with our program. We will be designating specific days and hours that will be open to the community to visit the Trailhead and have access to equipment which will be free of cost. We will have mountain bikes, archery equipment, fishing gear, cross country skis, snowshoes and fat tire bikes, and ice skating available. We will also be grooming the sliding hill through the winter and providing sleds for community use. The trails and sliding hill will be open to the public every day. Please follow our Facebook page, Izhaadaa Agwajiing, or simply scan the QR code for updates as we will also be announcing pop up events through the Fall and Winter.

**Miigwetch and we look forward to sharing this space with the Red Lake community!**

